



# **E200-470A17S-TB User Manual**

**Test Kit for E200-470A17S Audio RF Module**

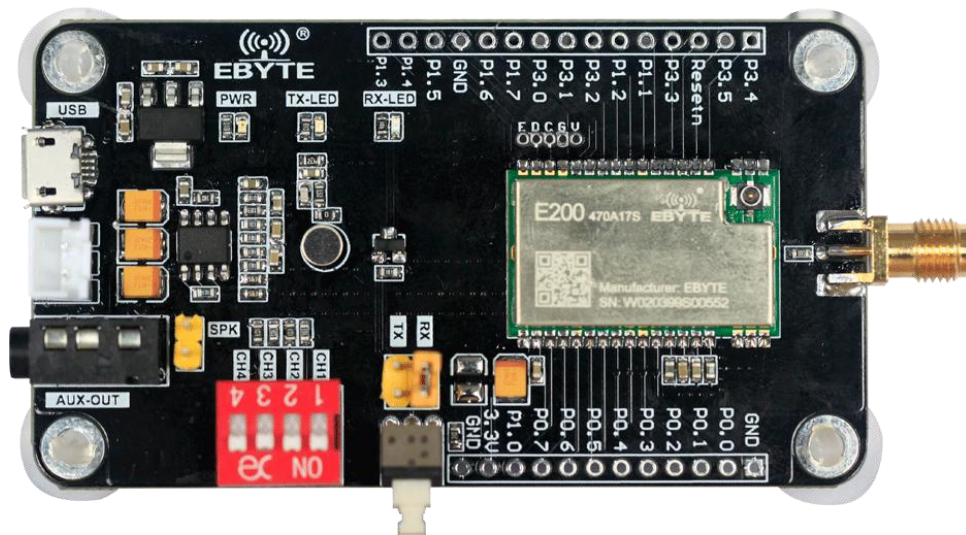


# Contents

<b>1.OVERVIEW.....</b>	<b>3</b>
1.1 INTRODUCTION.....	3
1.2 INTERFACES:.....	4
1.3 MODULE FEATURES:.....	5
<b>2.0 QUICK START.....</b>	<b>6</b>
<b>3.REVISION HISTORY.....</b>	<b>6</b>
<b>ABOUT US.....</b>	<b>6</b>

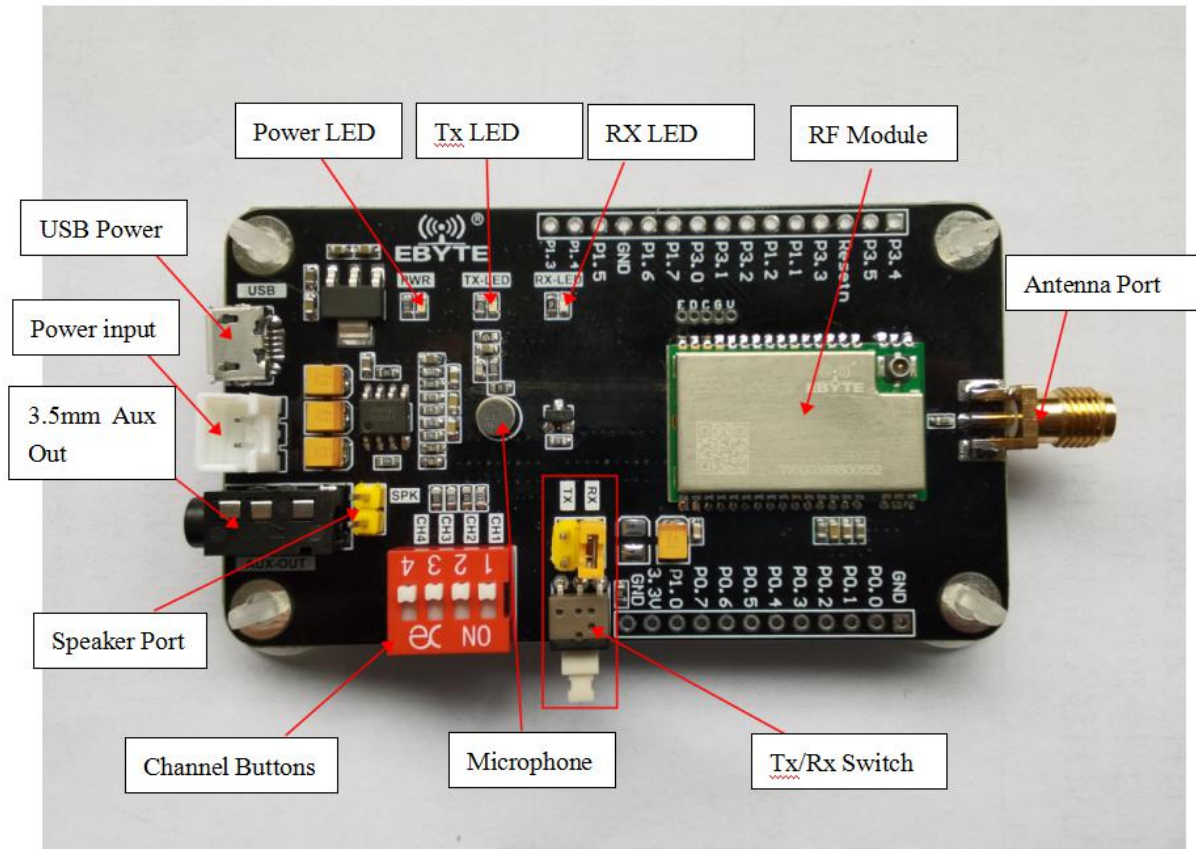
# 1. Overview

## 1.1 Introduction



E200-470A17S-TB is a test kit integrating E200 series patch audio module, USB power supply, 3.5mm headphone jack, dialing channel selection, and receiving and sending control buttons. Customers use this kit for testing and development, which will greatly reduce the difficulty of testing and development. This manual describes how to use the test kit. For more details on the modules, please read the E200-470A17S user manual.

## 1.2 Interfaces:



Type	Name	Function
Power	USB Power Port	One of the power input ports of the kit, adopts Mirco-USB form, 5V power supply
	Power Port	One of the power input ports of the kit, using 2P, 2.54mm pitch socket, 5V power supply
Audio	3.5mm Audio Out	3.5mm audio output interface, used to output the audio signal received wirelessly
	Speaker Port	8Ω/250mW speaker with direct audio output interface
	Microphone	Audio input microphone
Switch	Channel Buttons	Set the radio frequency channel of the wireless module, a total of 16 channels, after dialing changes, you need to restart and power on to take effect
	Tx/Rx Switch	Send and receive control button, default receiving, press the module to enter the sending mode
LED Indicator	Power LED	Kit power indicator, red
	Tx LED	Sending function indicator, blue, indicating that the wireless module is in the sending state
	Rx LED	Receiving function indicator, green, indicating that the wireless module is receiving
Antenna	Antenna	50Ω characteristic impedance, RF channel 470-512MHz

**Notice:**

1. Choose either one of the power ports for power supply. Don't connect both power ports at same time.
2. Max Power supply voltage is 5V DC.

## 1.3 Module Features:

E200-470A17S

# 470MHZ WIRELESS AUDIO TRANSMISSION MODULE

17dBm 300m Small size IPEX/Stamp hole

- ◆ Support one-to-many broadcasting transmission
- ◆ Integrated microphone input and speaker output
- ◆ integration of transmitting and receiving, fast mode switching
- ◆ 16 working channels configurable



## 2.0 Quick Start

### 2.1. Hardware connection

- A. Please prepare 5V power supply, Micro USB cable, antenna, 3.5mm earphone, and connect it to E200-470A17S-TB correctly.
- B. Set one kit as Tx node and another kit as Rx node by switching the Tx/Rx buttons.

### 2.2. Testing

- A. Speak to microphone of the Tx node.
- B. Listen to the earphone of the Rx node.

**Notice: the audio transmission is under half-duplex(bidirectional but one time for one direction only).**

## 3.Revision History

Version	Date	Description	Issued by
1.0	2020-09-30	Initial version	----

## About us

Website: [www.ebyte.com](http://www.ebyte.com)

Sales: [info@cdebyte.com](mailto:info@cdebyte.com)

Support: [support@cdebyte.com](mailto:support@cdebyte.com)

Tel: +86-28-61399028 Ext. 812

Fax: +86-28-64146160

Address: Building B5, Mould Industrial Park, 199# Xiqu Ave, West High-tech Zone, Chengdu, 611731, Sichuan, China



**Chengdu Ebyte Electronic Technology Co.,Ltd.**